

KEITH MOSKOW AND ROBERT LINN

# Martha's Vineyard Contemporary Living

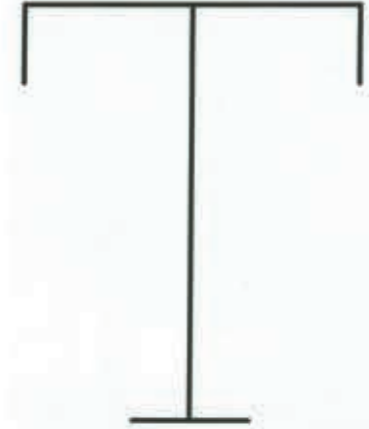
THE MONACELLI PRESS



2006

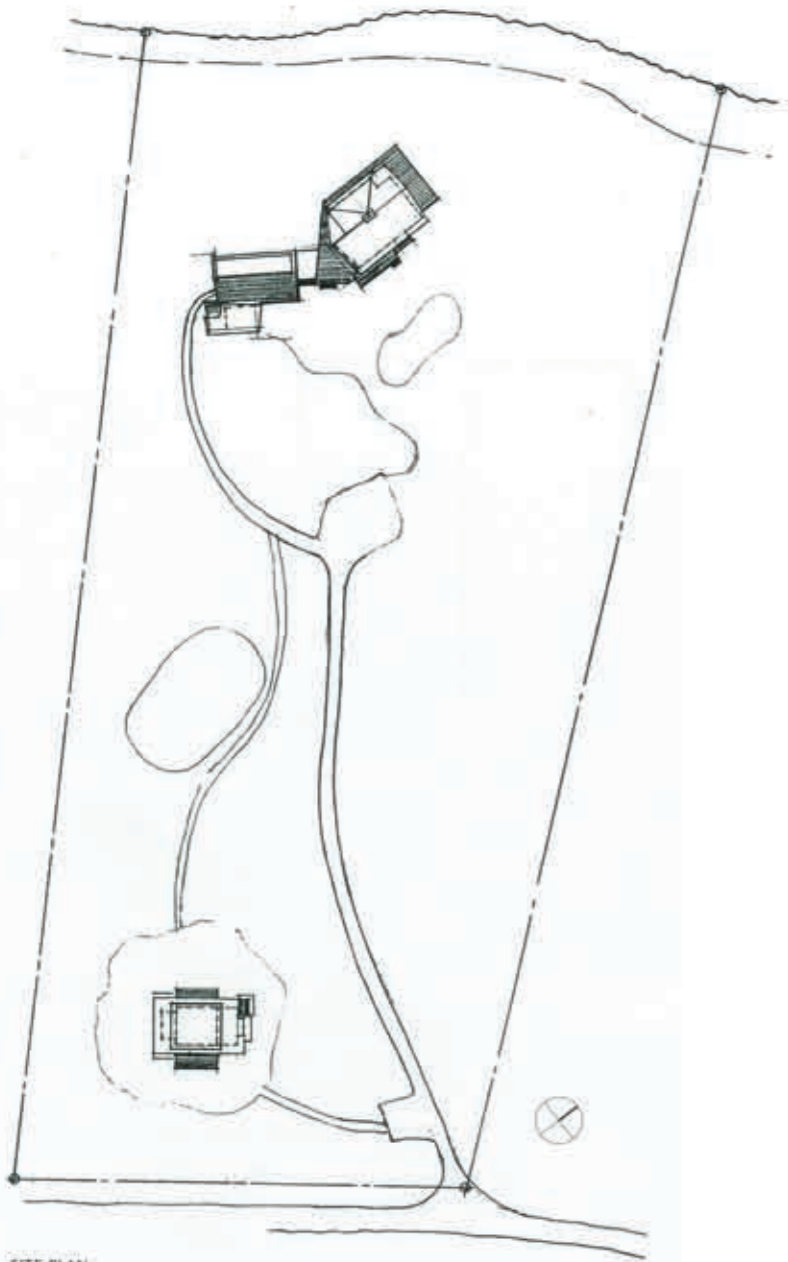
Meadow House Patrick R. Crosgrove, Architect

CHILMARK

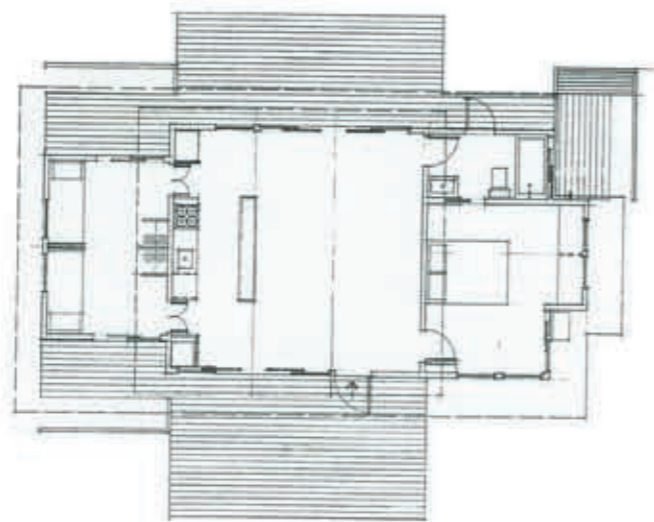


HIS HOUSE WAS CONCEIVED as three distinct but connected horizontal pavilions intended to rest on the site with minimal impact. The main pavilion at the center has an open floor plan that accommodates kitchen, dining, and living areas. Large sliding glass doors open onto decks bringing the outdoors inside to create a bright, airy interior with sweeping distant views. The secondary pavilions, containing bedrooms and baths, are located at opposite ends of the living area to provide privacy and to enclose exterior spaces. Decks on each side of the structure allow guests to experience the natural settings and vistas, while maintaining an unusual sense of personal space in a house of this scale. All areas have multiple glass sliding doors that are used as large windows for maximum light and full ventilation. Cooled by the distant ocean breeze, the house is sited to take full advantage of the changing landscape.

Zoning limits on size and height were ultimately an advantage to the final design, supporting its minimal intrusion on the site. The suggestion of an almost flat roof strengthens the horizontal design and benefits the neighbors by keeping the profile low and unassuming.



SITE PLAN



FIRST FLOOR PLAN



